



QUALITY MAGNETICS SINCE 1979



CM-2810

Vacuum tube output transformer 4:1 turns ratio 9.6K:600

- Vacuum tube line amplifier output
- Economical design for OEM applications
- 50% high-nickel + 50% steel core for warm sonic characteristics
- Very good bandwidth (- 0.3 dB at 20 kHz)
- Good CMRR: 85 dB at 60 Hz
- 0.05% THD at -10dB input level

The CineMag CM-2810 output transformer has a 4:1 turns ratio and is intended for OEM products. It is available standard with p.c. pins. It has very good bandwidth and good common mode rejection ratio (CMRR). The 50% high-nickel plus 50% steel lamination core gives it warm sound qualities.

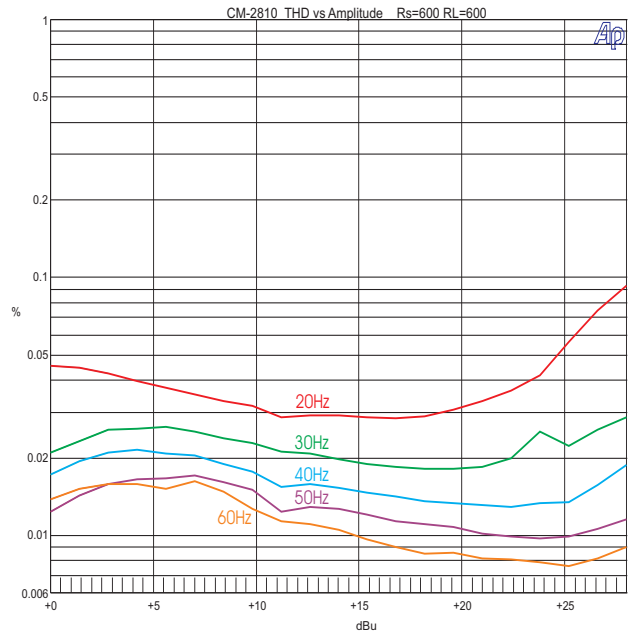
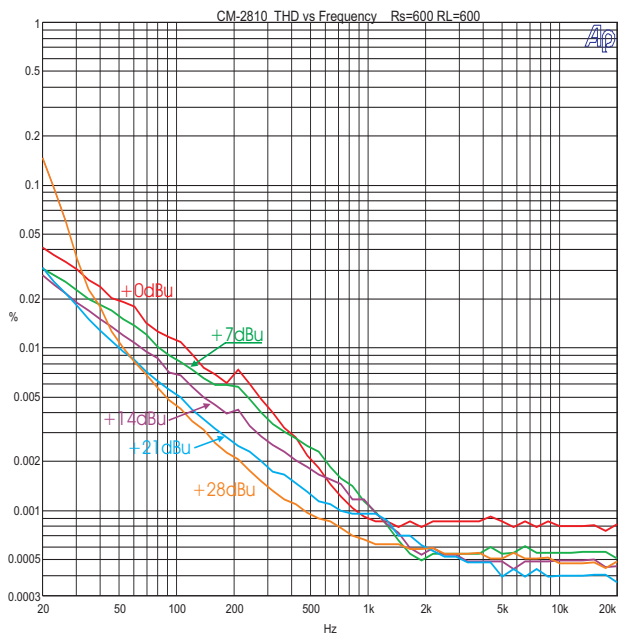
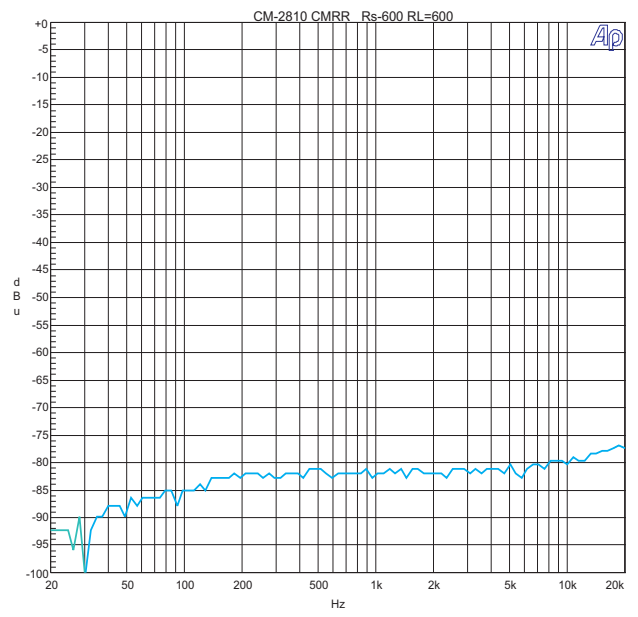
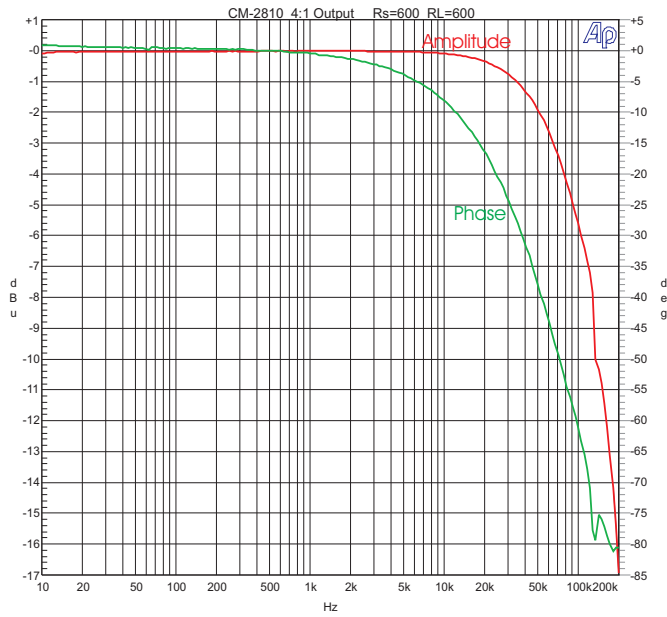
CM-2810

Parameter	Conditions	Typ
Turns Ratio		4 : 1 (9.6K:600)
Voltage Gain	1 kHz, Rs=600 RL=600 Test Circuit 1	-12 dB
Input Impedance	Test Circuit 4	9537Ω
Distortion (THD+N%)	1 kHz, +28 dBu Test Circuit 1 20 Hz, +20 dBu Test Circuit 1	0.007% 0.03
Max 20 Hz input level	1.0% THD; Test Circuit 1	≥+34dBu in [≥+22dBu out]
Response, ref 1 kHz	10 Hz Rs=600 Test Circuit 1 20 kHz Rs=600 Test Circuit 1 -3 dB	-0.01 dB +0.05 dB 65 kHz
Phase Shift at 20 Hz Phase Shift at 20 kHz	Referenced to source generator Rs=600 Test Circuit 1	+0° -16°
CMRR	60 Hz Test Circuit 3 per IEE Std 389-1996 ¶19 1 kHz Test Circuit 3 per IEE Std 389-1996 ¶19	87 dB 84 dB
Operating Temp Range	Operation and storage	0° C Min 70° C Max
Max Soldering Temp (p.c.)	10 Seconds	270° C Max

9050 Independence Ave. Canoga Park, California 91304

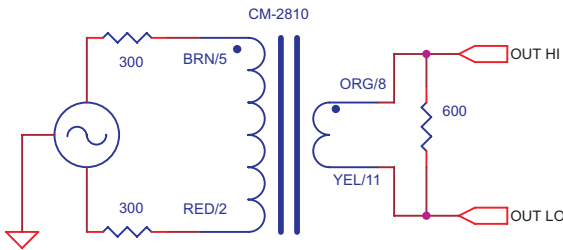
☎(818) 993-4644 ☎(818) 993-4604

<http://www.cinemag.biz>

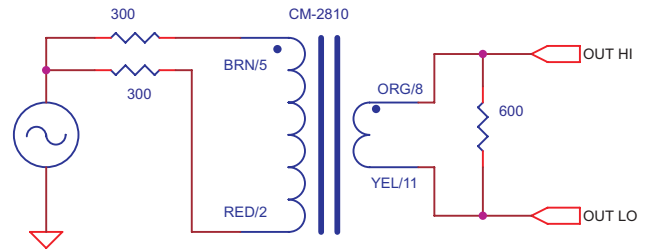


NOTES:

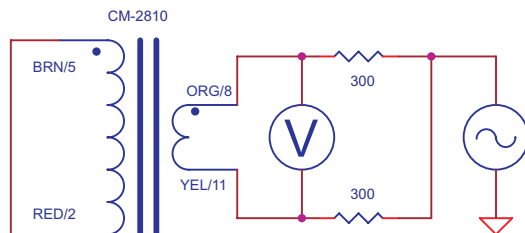
1. All graphs generated from one (1) randomly chosen device. No statistical averaging or weighting. Data from one sweep.



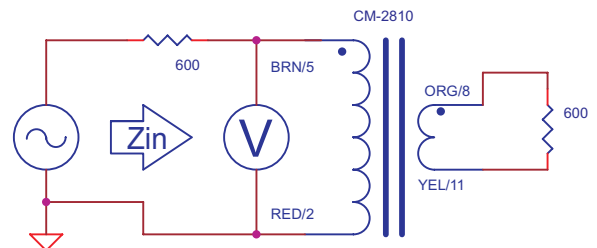
TEST CIRCUIT 1



TEST CIRCUIT 2



TEST CIRCUIT 3



TEST CIRCUIT 4

