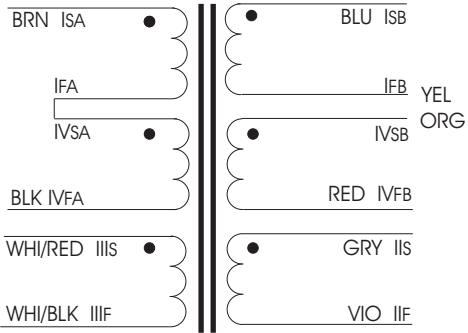
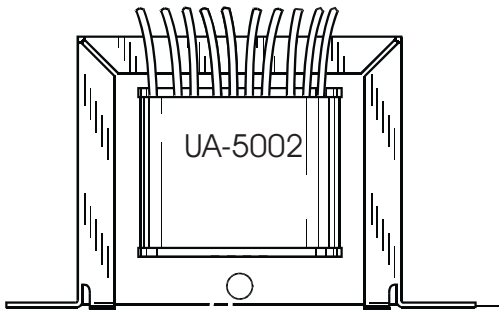
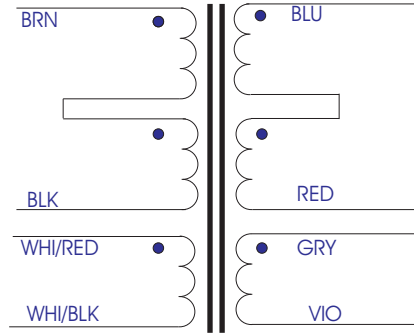


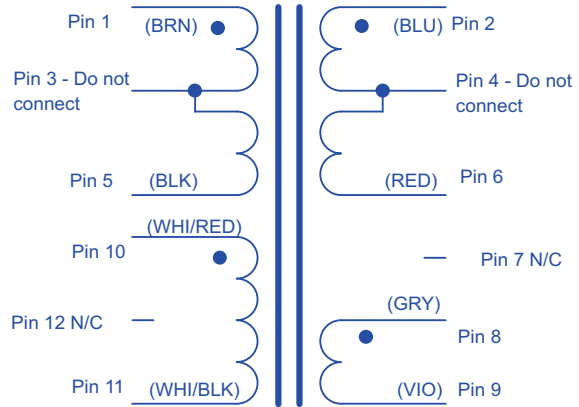
UA-5002



CM-96731

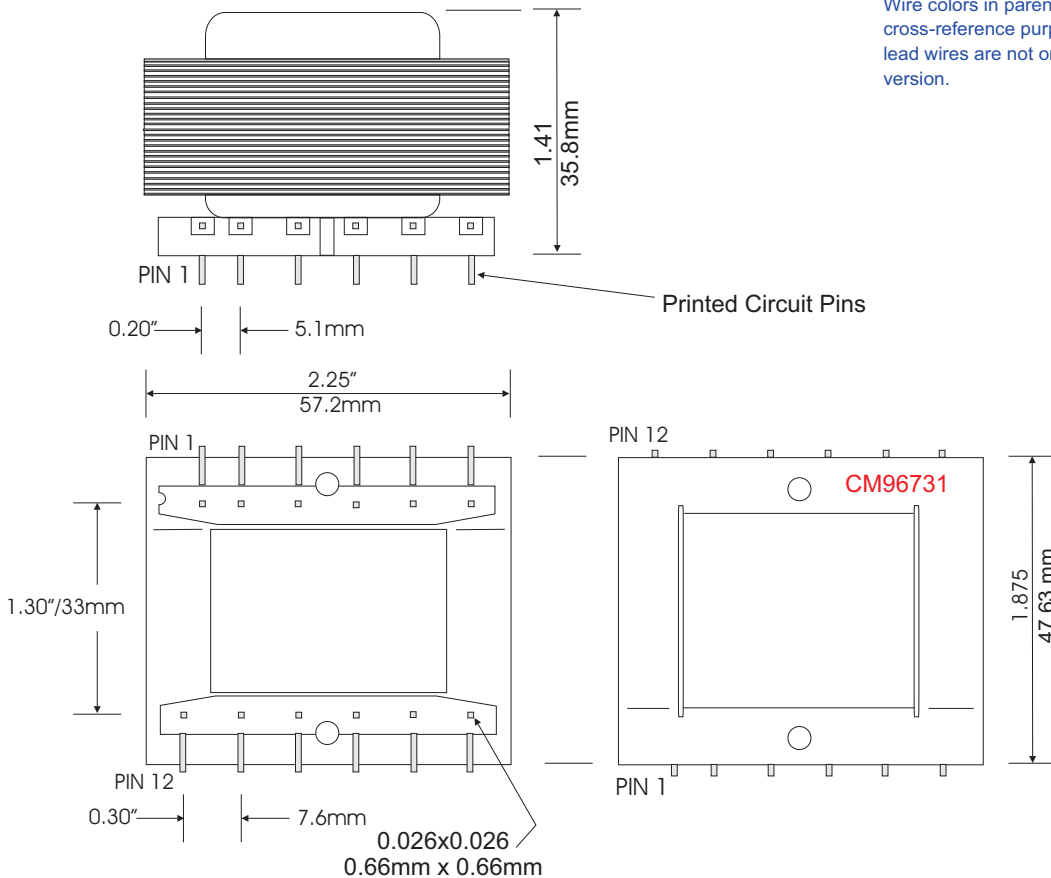


CM-9673PC CM-96731BPC

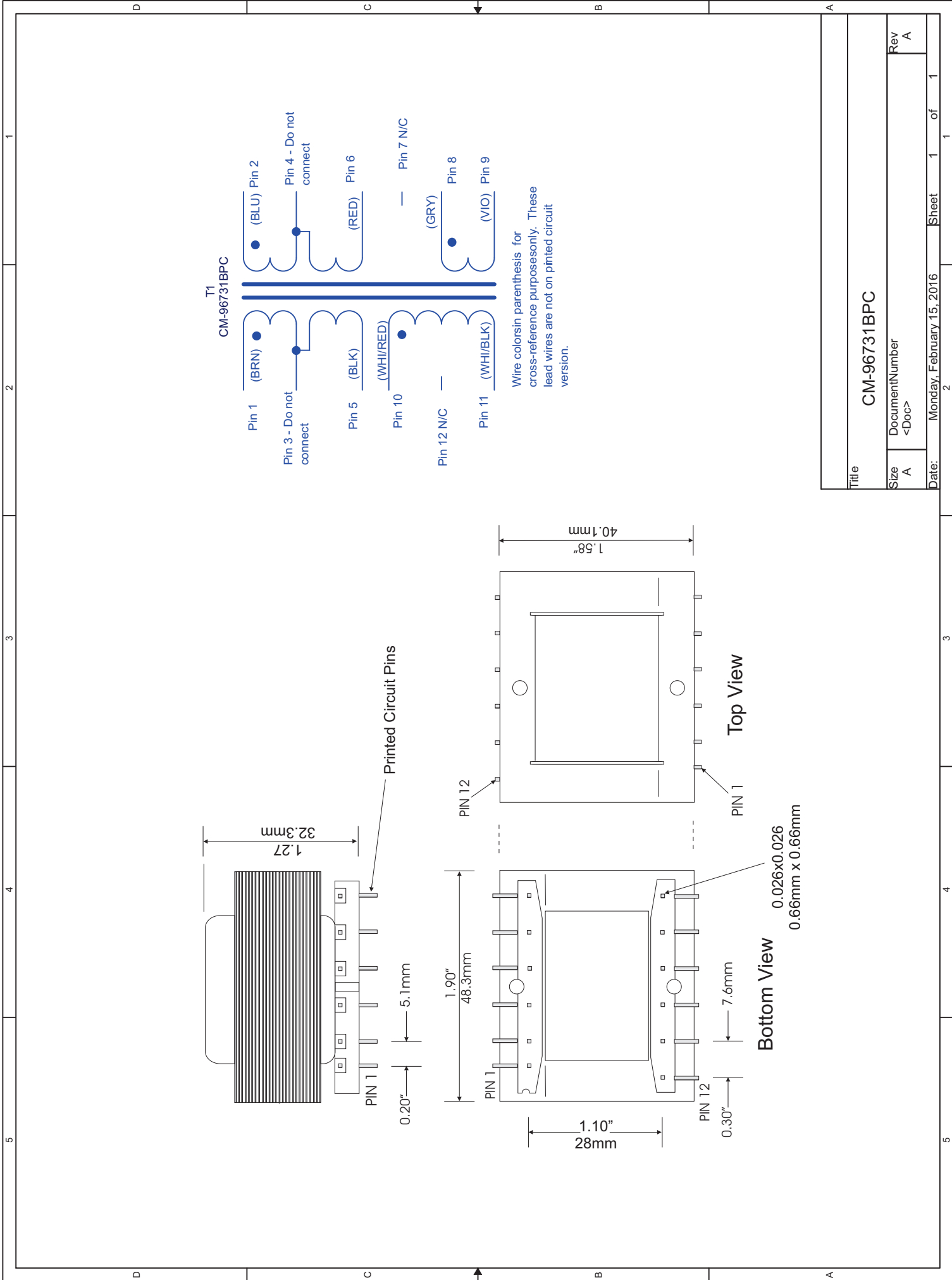


Wire colors in parenthesis for cross-reference purposes only. These lead wires are not on potted circuit version.

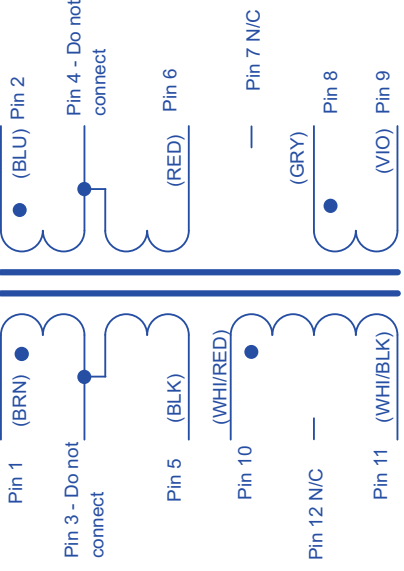
CM-9673PC



Printed Circuit Pins



T1
CM-96731BPC



Wire color in parenthesis for cross-reference purposes only. These lead wires are not on printed circuit version.

Printed Circuit Pins

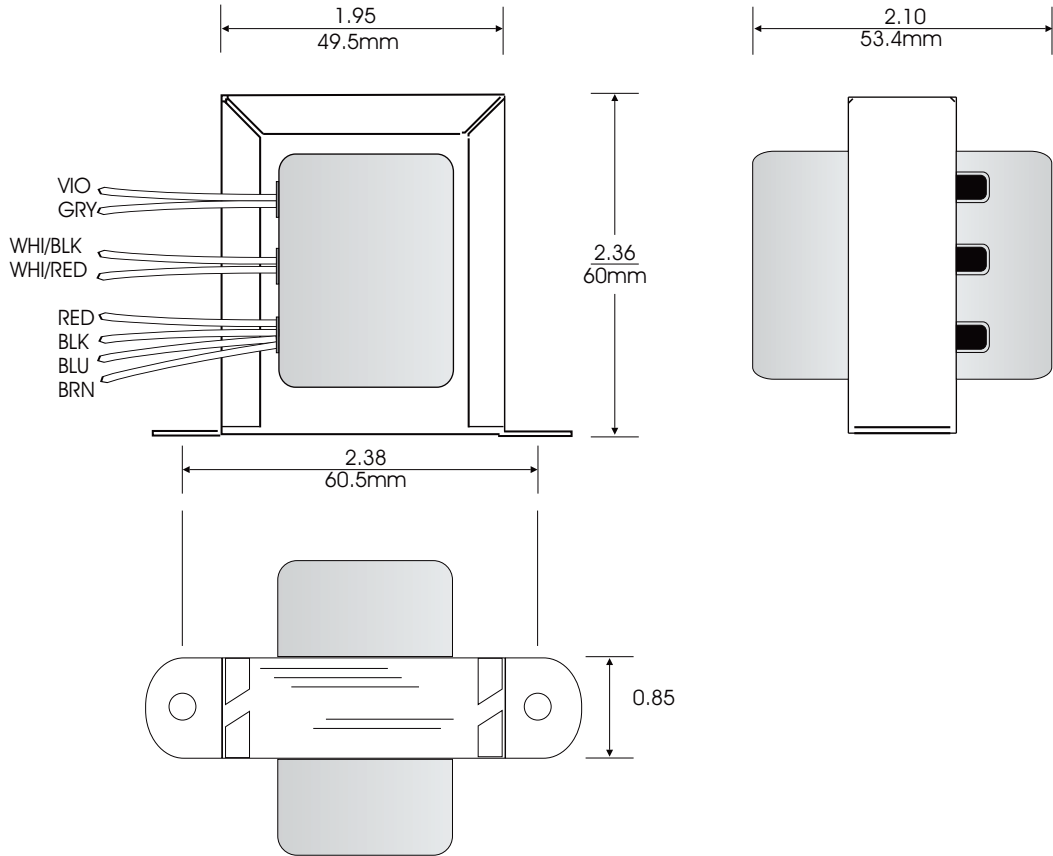
Top View

Bottom View

0.026x0.026
0.66mm x 0.66mm

Title		CM-96731BPC	
Size	DocumentNumber	Rev	A
A	<Doc>		
Date:	Monday, February 15, 2016	Sheet	1 of 1

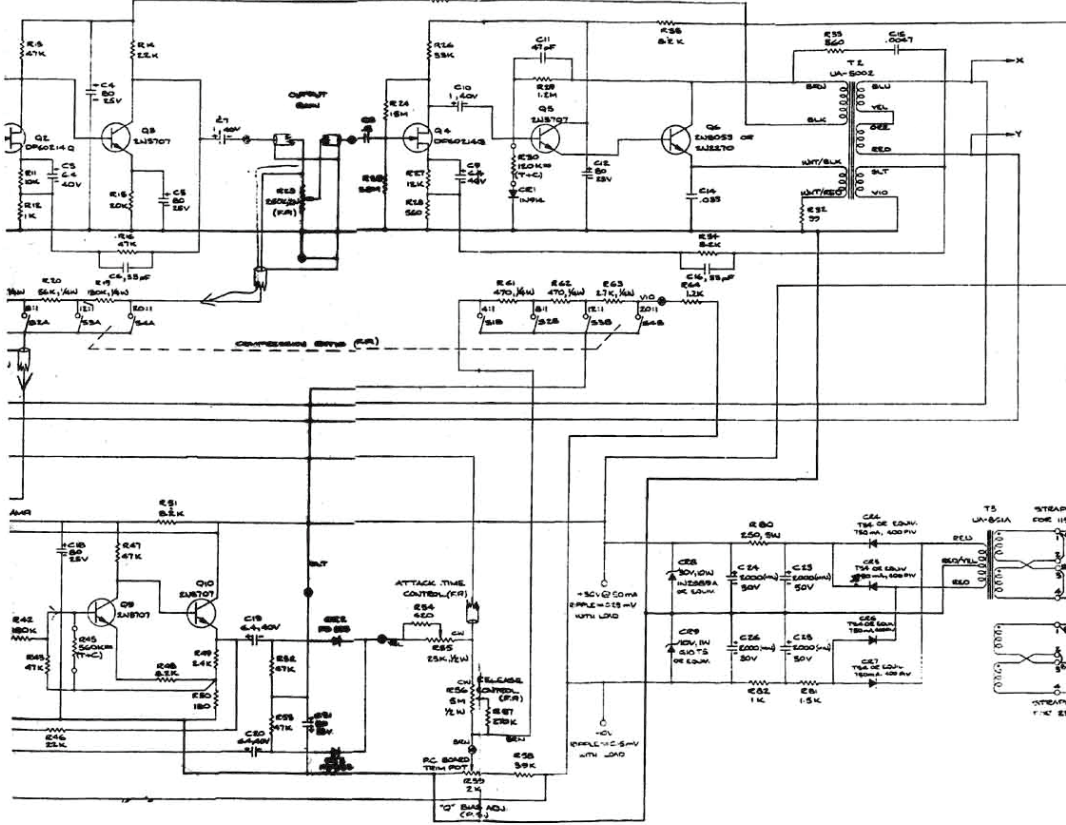
CM-96731 Vertical/with Covers 1176 Output Transformer



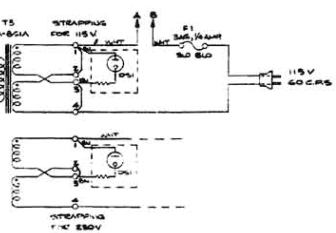
SIGNAL PRE-AMP

SIGNAL LINE AMP

REV.	DESCRIPTION	DATE
1	DESIGN TO DATE	1952



- NOTES:
- Q1 & 11 - SELECTED
 - Q2 & 4 - MATCHED TO LOW & HIGH K.F.E.
 - Q1, Q2 & 4 - H.F.E. 250 OR ABOVE
 - Q1 & 11 - IDENTICAL H.F.E. 210%
- UNLESS OTHERWISE NOTED:
- ALL RESISTOR VALUES IN OHMS, 1/2W, 5%
 - ALL CAPACITOR VALUES IN MICROFARADS
 - ALL SWITCHES NORMALLY OPENED
 - SWITCHES LOCATED AT FRONT PANEL ARE MARKED SW
 - A. LINE VOLTAGE RANGES 100V - 250V
- | PARTS | LAST | CHANGED |
|-------|------|----------|
| R | R22 | R22, R28 |
| C | C16 | |
| CR | CR2 | |
| Q | Q12 | |



UNIVERSAL AUDIO DIV. SOLID STATE
 1825 112TH ST. N. LUTHER AMPLIFIER
 MINNEAPOLIS, MINN. HOLDEN 1176
 NO. HOLLAND BLVD. 1162
 R-10743